



Multi-Comfort
House

SATE PARED ENTRE DOS UNIDADES

V nbp-sp2012-1.0

ISOVER
SAINT-GOBAIN

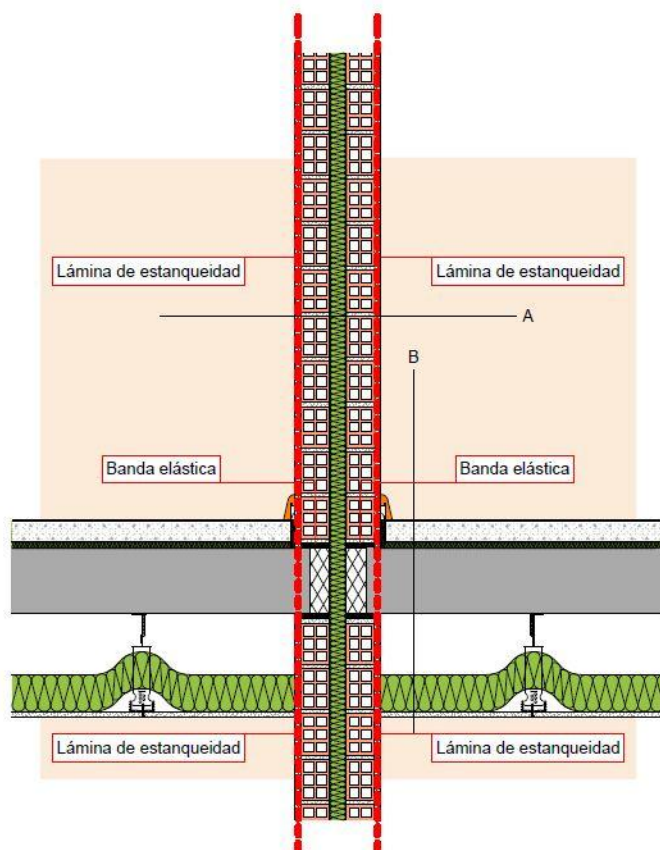
ÍNDICE

1. DETALLE CONSTRUCTIVO	3
2. ISOTERMAS	4
3. CALCULO DE TRANSMITANCIA.....	5

1. DETALLE CONSTRUCTIVO

A11

SATE - Pared entre dos unidades



Sección A en mm

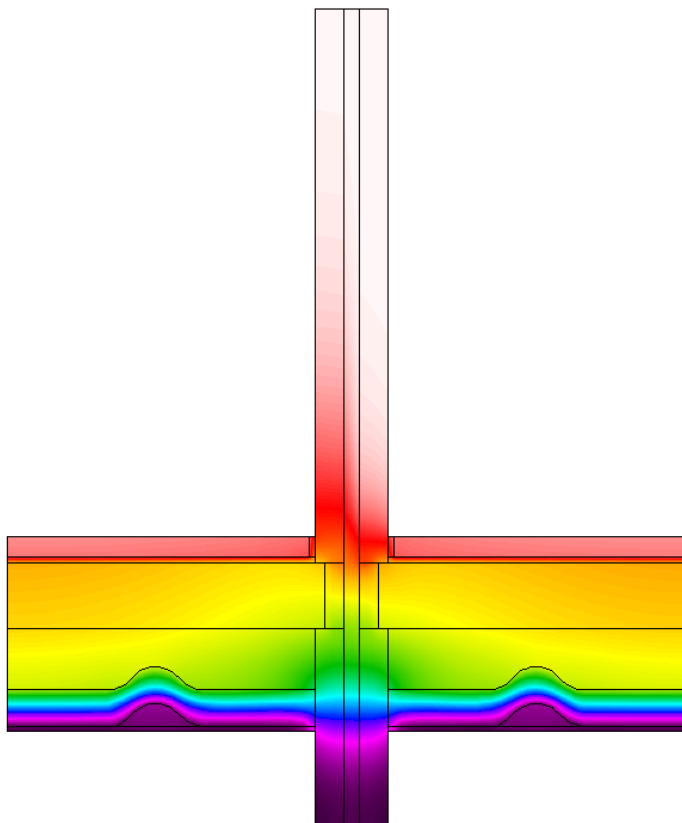
- 15 Revestimiento interior
- 70 Ladrillo cerámico perforado
- 40 Panel de lana mineral ARENA ($\lambda=0,035$) de ISOVER
- 70 Ladrillo cerámico perforado
- 15 Revestimiento interior

Sección B en mm

- Acabado
- Capa de hormigón
- Capa de separación
- 15 Aislamiento mediante ARENA PF de ISOVER ($\lambda=0,032$)
- Losa de hormigón (333 Kg/m²)
- 150 Plenum
- 90 Aislamiento mediante ARENA MASTER ($\lambda=0,038$) de ISOVER
- 12,5 Placa de yeso

2. ISOTHERMAS

homogen	U(Decke gg unbeh, horiz)=	0,285 W/m ² K
	U(AW gg AL, vert)=	W/m ² K
aus Therm Berechnung		
	U(Decke gg unbeh, horiz)=	0,334 W/m ² K
	U(Wand erdberührt, vert)=	W/m ² K
	U(Wand, vert)=	W/m ² K
Wärmestrom pro Längeneinheit		
homogen		
Q/l=(U*b)*delta T=		0,480 W/m
Wärmestrom pro Längeneinheit		
Wärmebrücke		
		0,653
		0,000
	Q(außen, horiz, vert)/l=(U*b)*delta T=	0,000 W/m
Summe:		0,653 W/m
Leitwertzuschlag L(Psi)		0,173 W/mK



3. CALCULO DE TRANSMITANCIA

Passive House Planning							Wedge Shaped Building Element Layers and Still Air Spaces -> Secondary Calculation to the Right	
U - VALUES OF BUILDING ELEMENTS								
Building: <input type="text"/>								
All Section A								
Assembly No. Building Assembly Description								
Heat Transfer Resistance [m ² K/W]								
interior R _{si} :							0,13	
exterior R _{se} :							0,04	
Area Section 1	λ [W/(mK)]	Area Section 2 (optional)	λ [W/(mK)]	Area Section 3 (optional)	λ [W/(mK)]	Total Width		
						Thickness [mm]		
1.	internal rendering					15		
2.	ceramic perf bricks					70		
3.	ARENA					40		
4.	ceramic perf bricks					70		
5.	internal rendering					15		
6.								
7.								
8.								
Percentage of Sec. 2							Percentage of Sec. 3	
							Total	
							21,0 cm	
U-Value:							0,522 W/(m ² K)	
All Section B								
Assembly No. Building Assembly Description								
Heat Transfer Resistance [m ² K/W]								
interior R _{si} :							0,17	
exterior R _{se} :							0,17	
Area Section 1	λ [W/(mK)]	Area Section 2 (optional)	λ [W/(mK)]	Area Section 3 (optional)	λ [W/(mK)]	Total Width		
						Thickness [mm]		
1.	screed					50		
2.	ARENA PF					15		
3.	concrete slab					160		
4.	cavity					150		
5.	ARENA MASTER					90		
6.	plaster board					13		
7.								
8.								
Percentage of Sec. 2							Percentage of Sec. 3	
							Total	
							47,8 cm	
U-Value:							0,285 W/(m ² K)	