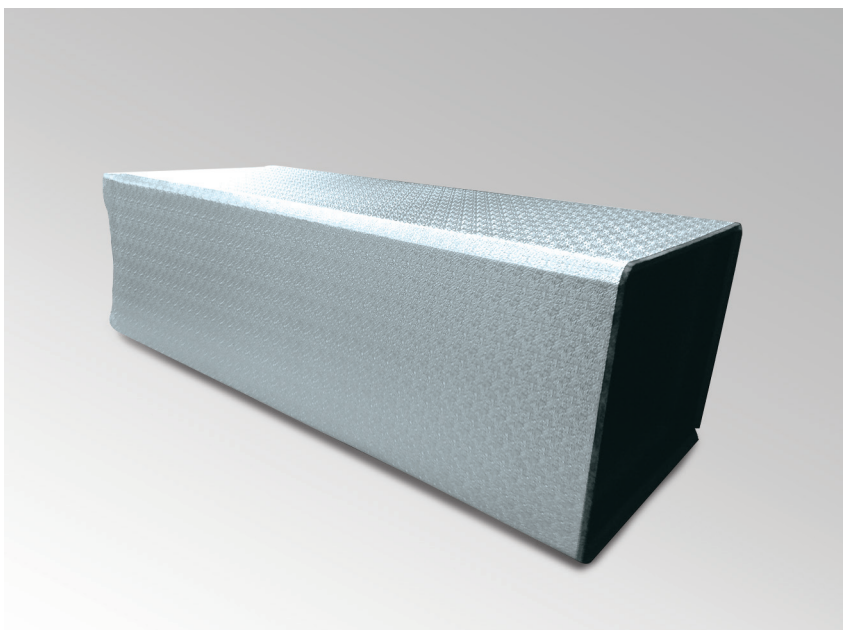


## CLIMAVER® self-supporting ducts for exterior use



ISOVER high-density glass wool panel for exterior use. A non-absorbent panel, faced externally with plasticised embossed aluminium providing a completely impermeable water vapour barrier and ultra-violet protection, and attached to the stonewool panel through a system that is resistant to exposed environments. The interior is lined with a black reinforced Neto glass fibre weave which offers great strength.

Due to its excellent thermal and acoustic performance, **CLIMAVER® STAR** is the ideal solution when installing: · Air distribution self-supporting duct systems in heating and cooling installations on building exteriors.



### THERMAL INSULATION

High thermal performance.



### AIRTIGHTNESS

Maximum watertightness level.



### SOUND INSULATION

Optimal acoustic environment quality.



### FAST INSTALLATION

Fast, simple installation. Maximum on-site efficiency.



### EASY HANDLING

Join continuity thanks to the exclusive panel tongue and groove system.



### RECYCLED GLASS

Sustainable product with a composition of more than 50% recycled material. 100% recyclable material.



CHARACTERISTIC	SYMBOL	UNIT	QUANTITIES AND DECLARED VALUES				STANDARD
Thermal conductivity	T	[°C]	10	20	40	60	EN 12667 EN 12939
	$\lambda$	[W/(m·K)]	0.032	0.033	0.036	0.039	

CHARACTERISTIC	SYMBOL	UNIT	QUANTITIES AND DECLARED VALUES						THICKNESS [mm]	STANDARD	
Practical acoustic absorption coefficient, $\alpha_p$	-	Hz	$\alpha_w$	125	250	500	1000	2000	4000	-	EN ISO 354 EN ISO 11654
	$\alpha_p$	-	0.90 <sup>(1)</sup>	0.40	0.70	0.85	0.90	1.00	40		
Acoustic attenuation, in a straight duct, $\Delta L$ (DB/m)*	Section, S mm <sup>2</sup>	200 x 200	-	5.82	12.75	16.73	18.12	21.00	-		
		300 x 400	-	3.40	7.43	9.76	10.57	12.25			
		400 x 700	-	2.29	5.01	6.57	7.12	8.25			

Acoustic trials with plenum: CTA 140003/REV.

<sup>(1)</sup> Weighted acoustic absorption coefficient  $\alpha_w$ , without plenum 0,70 (40mm thickness) CTA 140053/REV-2 y  $\alpha_w$  without plenum 0,90 (50mm thickness) CTA 140045/REV-2.

\* Estimated by the formula:  $\Delta L = 1.05 \cdot \alpha_p \cdot 1.4 \cdot P/S$ , (P = perimeter) for the sound power of a ventilator with a 20,000 m<sup>3</sup>/h flow, load loss 15 mm ca.

CHARACTERISTIC	SYMBOL	UNIT	QUANTITIES AND DECLARED VALUES				STANDARD
Reaction to fire	-	Euroclass	B-s1, d0				EN 13501-1 EN 15715
Resistance to the diffusion of water steam of mineral wool, $\mu$	MV	m	1				EN 12086
Resistance to the diffusion of water steam of facing	Z	m <sup>2</sup> ·h·P	150				EN 12086
Thickness of the air layer equivalent to water vapor diffusion, Sd	MU	m	100				EN 12086
Airtightness	-	Class	D				UNE-EN 13403 EN 12237
Resistance to pressure	-	Pa	800				UNE-EN 13403
Dimensional stability, $\Delta\epsilon$	-	%	<1				EN 1604
Characteristics	-	-	Resistance to the elements climatic cycle ageing. Ideal for direct application onto building exteriors. Resistant to the most aggressive cleaning methods. No proliferation of mould or bacteria.				-
Working conditions	-	-	Air speed up to 18 m/s and circulating air temperature up to 90°C.				-

**DELIVERY FORM: STANDARD DIMENSIONS / PACKAGING INFORMATION**

Thickness d (mm)	Length l (m)	Width b (m)	m <sup>2</sup> /pack	m <sup>2</sup> /pallet	m <sup>2</sup> /truck	Designation code
40	3.00	1.21	65.34	65.34	1568	MW-EN14303-T5-MV1



**www.isover.es**

*This data sheet was completed on the date indicated on the right-hand side and was done with ISOVER's knowledge and experience at that time. However, it does not offer any legal guarantee, unless it has been expressly agreed. Bearing in mind that our knowledge and developments of building solutions and products are continuously evolving, ensure that when you use this data sheet, it is the latest version. The description of the product applications does not take into account the special circumstances that may arise for a specific case. Please check that this product is the appropriate one for the application you are considering. For more detailed information, contact our network of ISOVER branches.*

SAINT-GOBAIN ISOVER IBÉRICA, S.L. • C/ Príncipe de Vergara, 132 • 28002 Madrid • Spain

